

Check Project volume - Solidworks

1. Open the drawing (File > Open), or press Ctrl + O. Figure 1.

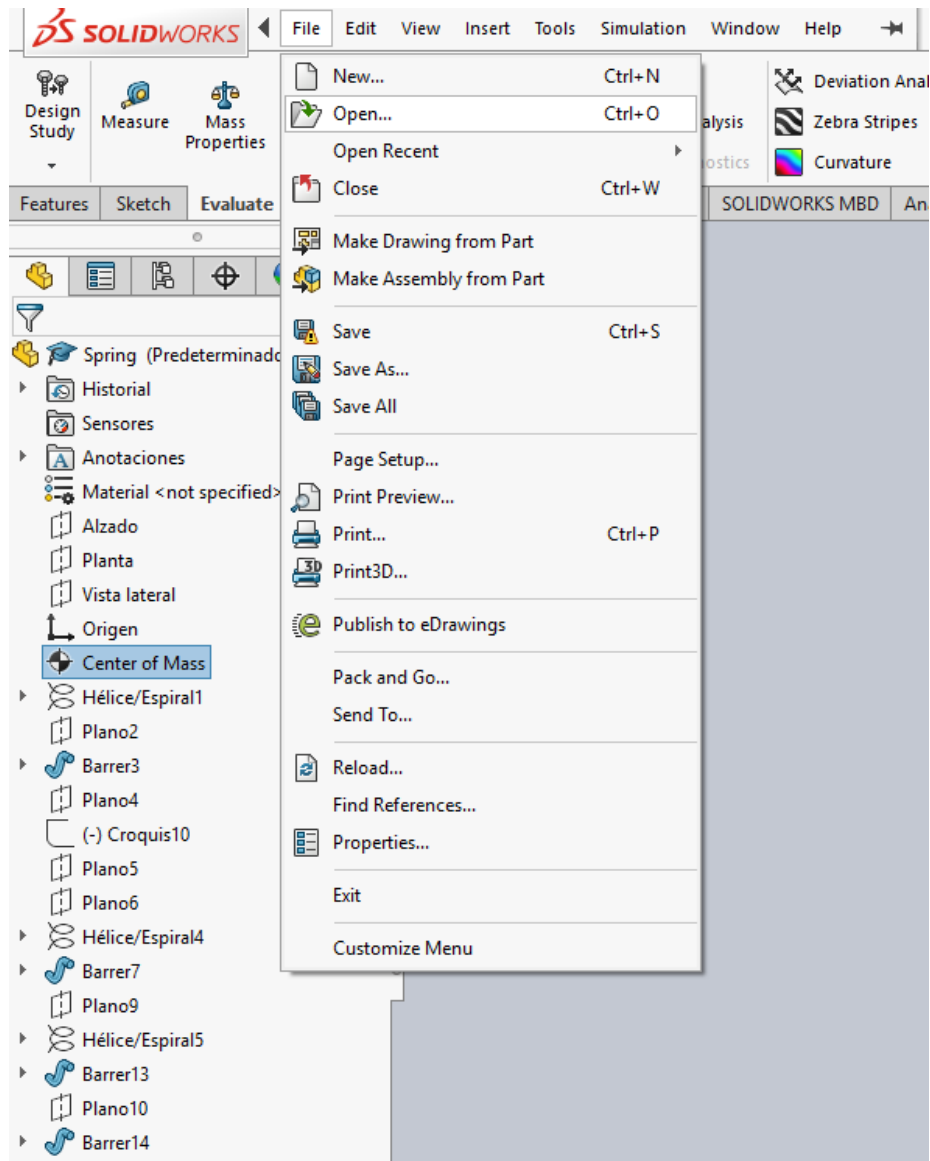


Figure 1 Open Drawing

2. Once the drawing is opened, go to “Evaluate” ribbon and then select “Mass Properties”. Figure 2.

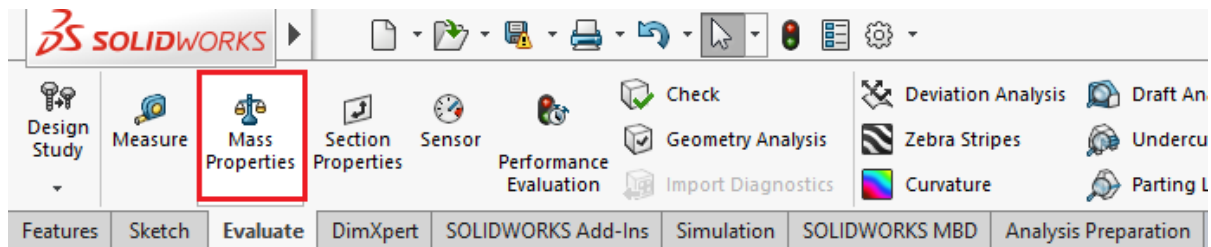


Figure 2 Mass Properties

3. The following window will appear showing all properties of the material, such as density, mass, volume, surface area, center of mass, and inertia (everything in millimeters). Figure 3.

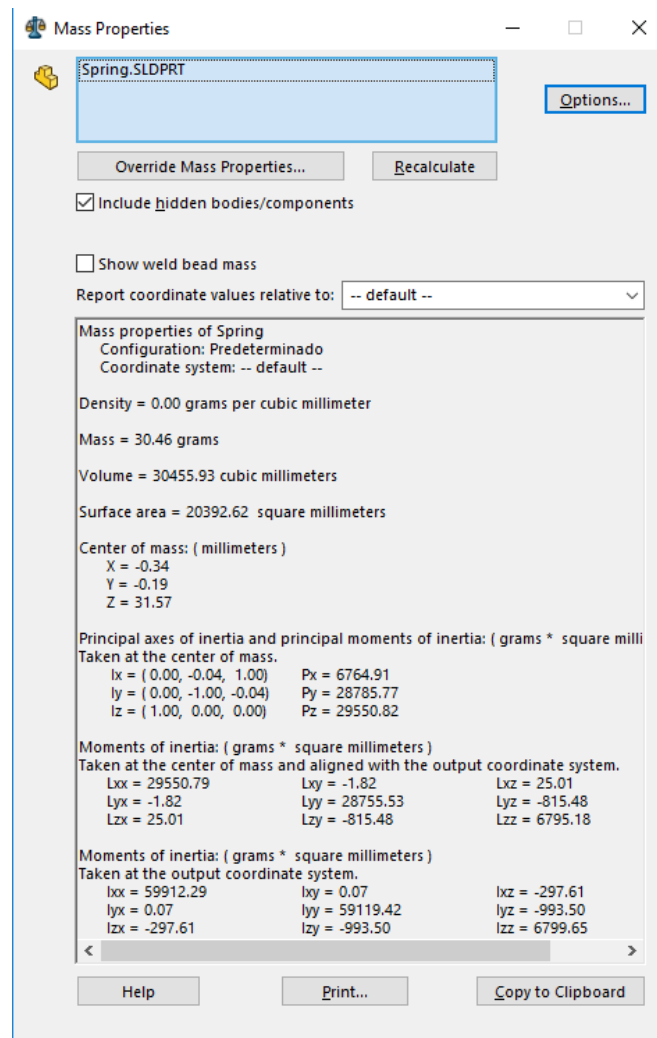


Figure 3 Properties

4. To change the values from millimeters to inches, go to “Options...”, then select “Use custom settings”. Figure 4.

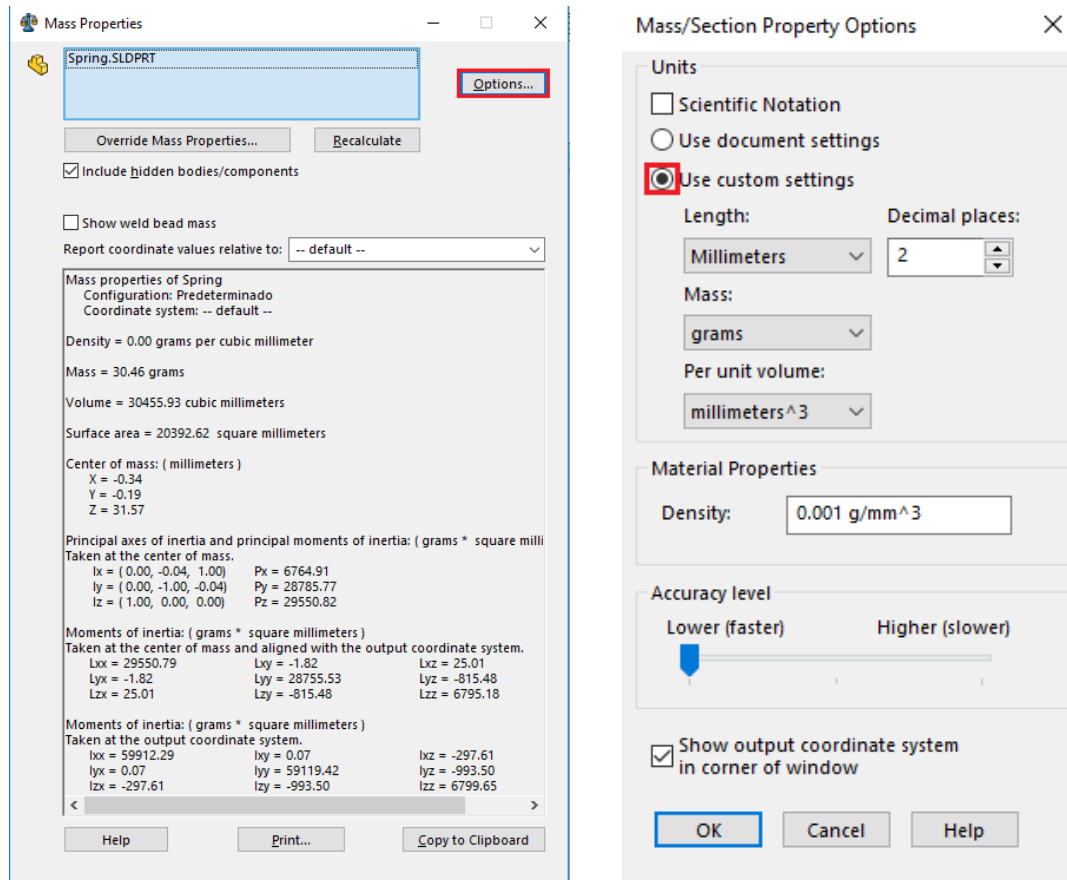


Figure 4 MM to Inch Change

5. Change the “Per unit volume” by clicking on the arrow, then select “inches^3”.
After, press OK. Now, it will show the volume in cubic inches. Figure 5.

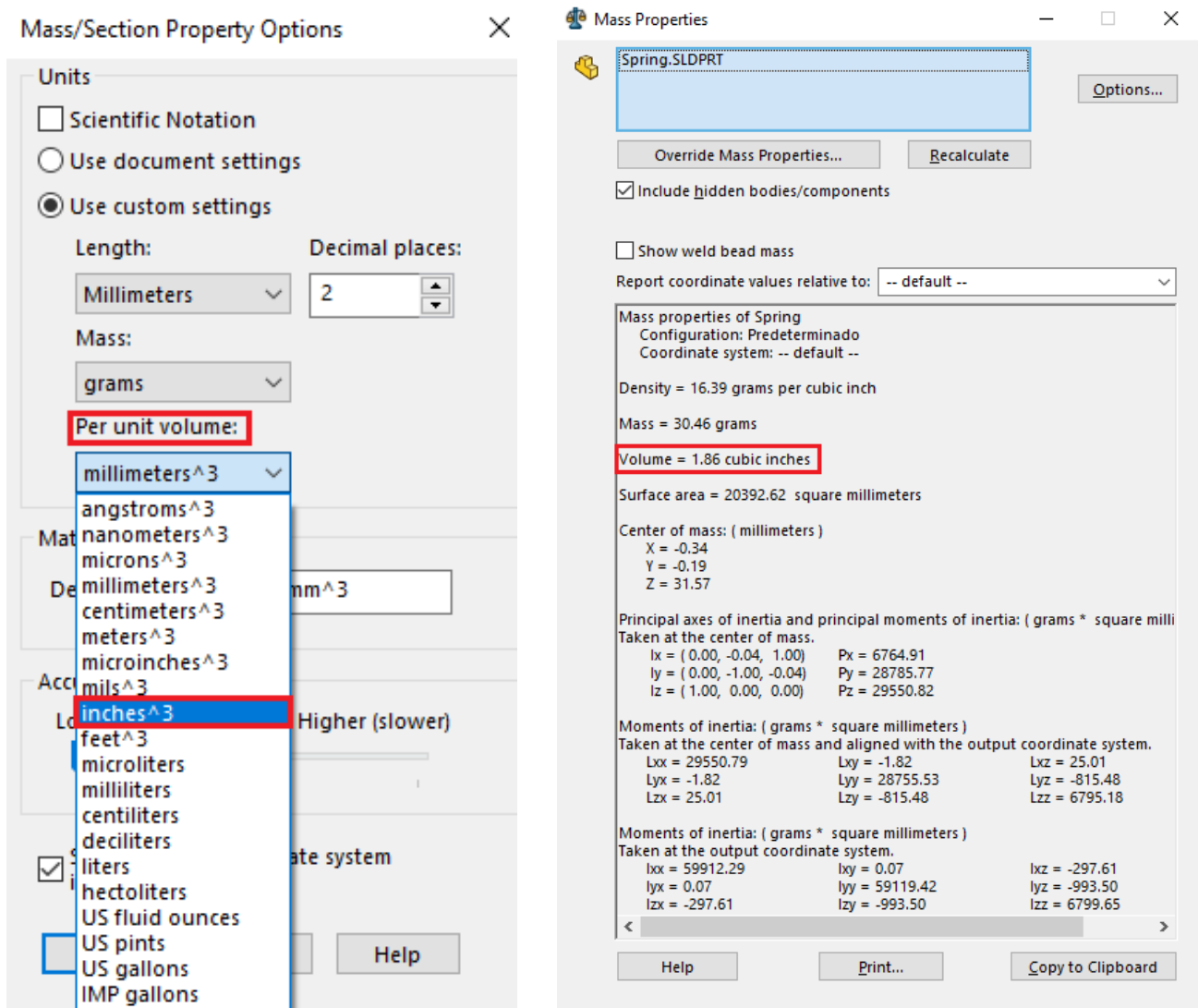


Figure 5 Unit change