

Visual Schedule Builder (VSB)

Ahead of the enrollment period opening, you should bookmark the [Selecting your Class Schedule tip sheet](#) and you should also watch the [Visual Schedule Builder \(VSB\) tutorial video](#). Bookmark the [Important Academic Dates](#) to keep track of all relevant enrollment dates each term.

First Semester Students:

If COM101/COM111 is listed as a requirement for your program, you will be able to self-enroll in this course. Enrollment in either COM101 or COM111 is based on your assessment which was completed as part of your admission. Your required COM course is listed in the “My Requirements” section of VSB.

Seneca College
Postsecondary Education
Academic Program: Undeclared PSE
Academic Plan: Undeclared PSERegular

Generated: 08 Mar 2021 03:26:26PM

Read the Special Instructions below: Some programs require an English Course, a Math course, or both in the first semester. Please see the details below for the course(s) applicable to your program. If you have already completed the course(s) noted below, an equivalent course, or have received a Transfer Credit, you have met the requirements and no action is necessary.

If an English course and/or Math course are required, and if you do not see the course(s) noted below listed under your 1st Semester Requirements and available to select, then you will need to search for the course(s) in the Visual Schedule Builder (VSB) tool to add to your schedule.

Your required **ENGLISH** course for Program: BAB is **COM101**. Your required **MATH** course for Program: BAB is **MBF101**.

In your program, you may be required to complete a Math Skills Assessment. [Find out if you require a math skills assessment for your program.](#)

Course Enrollment V.S. Block Enrollment:

Each program allows for either course-based enrollment or block-based enrollment. Course-based enrollment is where you individually select your courses based on your program requirements. Block-based enrollment is where you select a block of courses, where each block contains all required courses for the term. Note, you cannot make changes to individual courses within a block. Instead, you will have to select another block of courses.

Delivery Modes:

Learn more about the various delivery formats available [here](#). [Watch this video](#) to learn more about the four delivery formats.

Course Information:

When selecting courses, be sure to carefully read the ‘requirements’ section. Here you will find information on program/section restrictions and prerequisite/corequisite information.

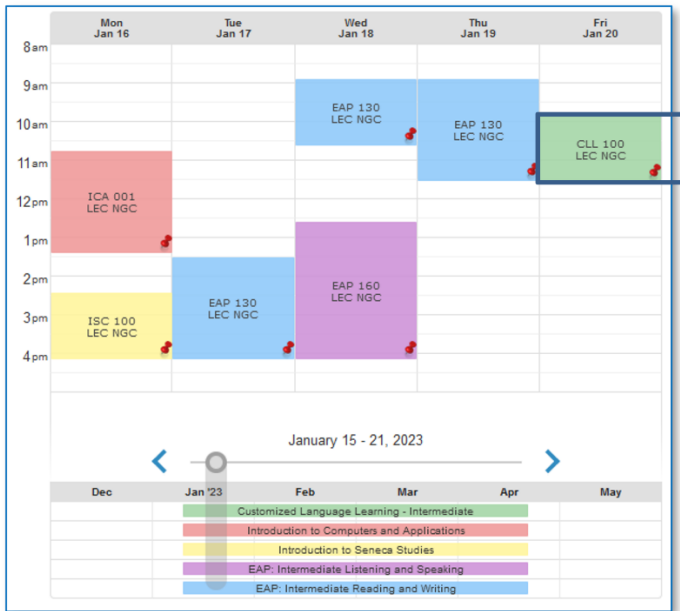
1 Expand the information by clicking the arrow. Here you can view the campus(es) the course is offered, and all sections will be listed.

2 Be sure to review any restrictions that may be in place, including pre/corequisites.

3 Tip: ‘Uncheck’ the sections that have restrictions to view only available sections.

Visual Schedule Builder (VSB)

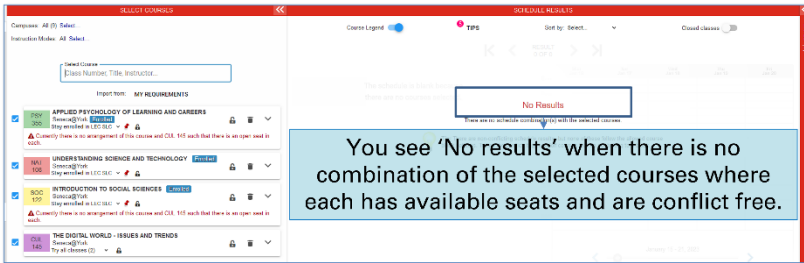
Pin Course Selections:



Once you've found a course/section that works, you can 'pin' it by clicking on it. Remember, pinning a course does not reserve a spot. You must complete the full enrollment process and see "enrolled" next to the course.

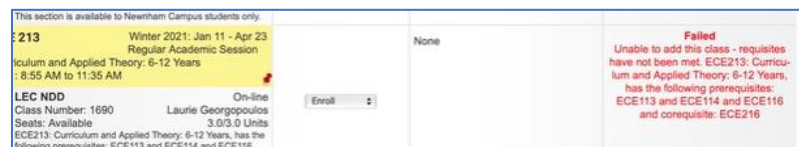
You can also 'unpin' a course to increase the number of schedule results.

Troubleshooting:



No Results:

You see this when there is no combination of selected courses where each has available seats and are conflict free. Try to 'uncheck' or 'unpin' courses to see if results are shown.



Failed Error:

You will see this message if you do not meet the requirements of the course (this could be pre/corequisites or course/section restrictions. Try to select another course/section that you have the requirements for.

Still have questions?

Learn how to [contact your Student Adviser](#) via [The Service Hub](#). Also, check out the [Student Advising site](#) on MySeneca to learn more about what your Student Adviser can do for you!